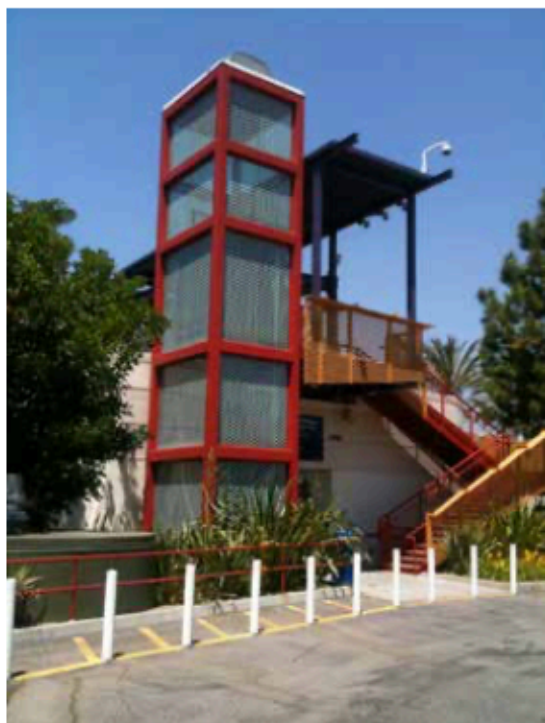




**M O D U L A R  
E L E V A T O R  
M A N U F A C T U R I N G**

*Quality elevators taking you to a higher level.*



Why MEM .....	Page 1
High profile, highly technical elevator .....	Page 2
6 Stops-Construction use .....	Page 3
Unique installation solutions .....	Page 4 & 5
Conclusion .....	Page 6

---

## Thank You

Thank you for your interest in Modular Elevator Manufacturing and the concept of modular building for vertical transportation. You will find there is no better option for low and mid-rise projects when it comes to elevator choice.

Take your time and read through the information. Although it contains a lot of facts, there is no way to write all of what you need to know. As a result we ask that you consider contacting us for further information or going to [modularelevator.net](http://modularelevator.net). Our address is Modular Elevator Manufacturing, Inc. P.O. Box 7478 Westlake, CA 91359 - Ph. 800-755-9359. Or contact your primary contact at MEM. We are quality elevator taking you to a higher level.

## Please Read First

Confidentiality Notice: Please take note! This document is confidential and contains proprietary information and the intellectual property of Modular Elevator Manufacturing, Inc. Neither this document nor any of the information contained herein may be reproduced, disclosed or discussed in detail under any circumstances without the express written permission of Modular Elevator Manufacturing, Inc. This includes, but is not limited to any outside organization, company, corporation or individual not employed at your organization dealing specifically with this project.

Please be aware that disclosure, copying, distribution or use of this document and the information contained therein is strictly prohibited. To gain sharing permission please contact us at Modular Elevator Manufacturing, Inc. P.O. Box 7478 Westlake, CA 91359 800-755-9359.

# The MEM Difference

## QUALITY

Quality control is not just something that is done when the elevator is inspected at the end of the job, but something that goes on continually. We can walk the hoistway checking alignment, welds and plumbness of the rails and shaft. Likewise, the elevator car is accessible during manufacturing.

Skilled employees literally walk around the cab and have full access to all the walls and car top. Wiring is easier and better. To make sure everything is done to the highest level of quality we have a 10-point inspection conducted by a certified elevator technician that every elevator must pass before it is placed on the truck.

## QUALITY + EXPERIENCE

We have the most experience in the elevator/modular elevator industry. Others can say they have over 20 years of experience, but not prove it. Factually, we have produced and installed four-times or more the vertical transportation options than the closest competitor.

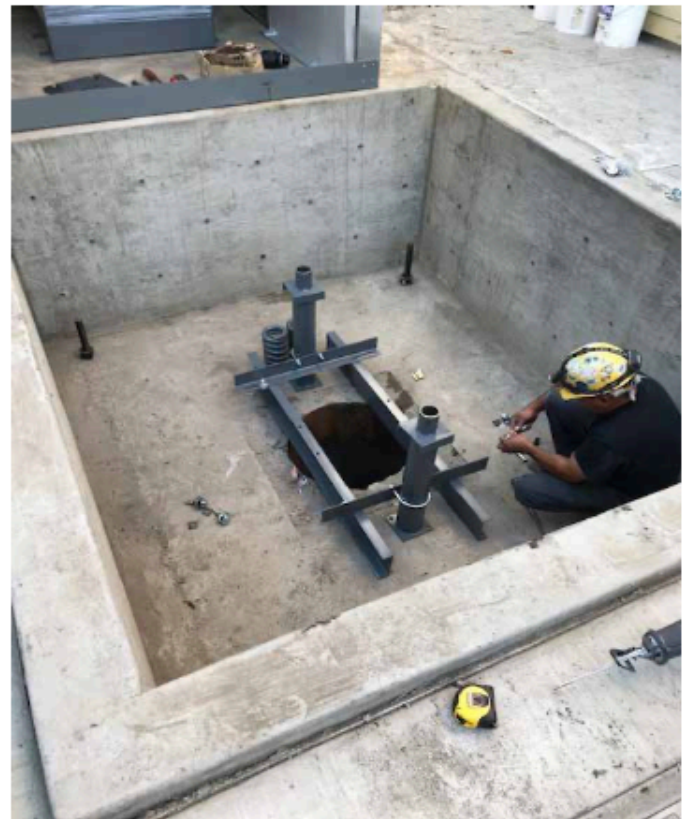
This means there will be no learning curve on your project. Nothing we do is an experiment and there will be no seat of our pants problem solving with your elevator.

## QUALITY + EXPERIENCE = THE BEST

MEM is the best modular elevator due to the quality of the product and experience we provide. Over the decades ever-increasing knowledge has gone into our elevators meaning improved engineering, parts, manufacturing, delivery, set up and start up. We know what it takes to deliver quality every time. We are quality elevators taking you to a higher level.



The elevator is manufactured horizontally making quality control a snap. This makes the structure and rails plumb and straight all the time.



At the job site, the pit is readied and then the elevator is simply craned into place. A set takes less than a day and the start up is less than a week.

**20+**

**Years of Experience  
in the Industry.**

**400+**

**Supervised and Directed  
Installations**

**80+**

**Million in Sales  
Nation Wide**

**28+**

**Experience in States  
From CA to NY**



# High Profile, Highly Technical Elevator



**Project Dates:**  
**2 years in design.**  
**6 years in Construction.**  
**Sept 2014-January 2020**

## AERIE CONDOMINIUMS- NEWPORT BEACH, CA

### ELEVATOR DESCRIPTION:

An adjacent opening elevator is the “Rolex” of the elevator world. They are rare and, from a conventional elevator company, very expensive. The reason being...they are difficult to align and adjust in the field. MEM has the advantage of installing our elevators horizontally, in our climate-controlled facility. We can access the cab and rails from the outside of the hoistway, making adjusting and aligning rails significantly easier.

MEM set this elevator early in the project and construction went up around it.

Project video. (MEM appears at about 2min.)

<https://youtu.be/J0GrMvFKQAo>

Newport Beach Magazine “Eco-conscious” article:

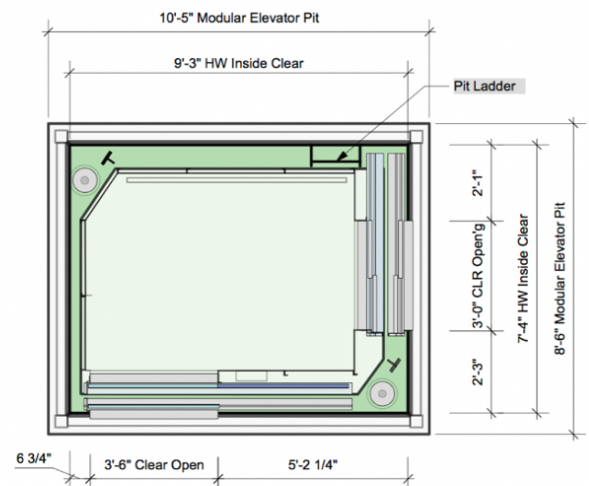
<https://www.customarchitecture.com/press-details/newport-beach-magazine-eco-conscious-construction/42>

### Contractor:

Tony Valentine Construction  
949-723-6449  
2435 East Coast Hwy Suite 2, Corona Del Mar, CA 92625  
<http://tonyvalentineconstruction.com/>

### Architect:

Brion Jeannette Architecture  
949 645-5854  
470 Old Newport Boulevard, Newport Beach ,CA 92663  
<https://www.customarchitecture.com/>



ELEVATOR PLAN VIEW



# 6 Landings & Construction Use

## ELEVATOR DESCRIPTION:

6 landing, in-ground hydraulic elevator in luxury apartments in San Diego, CA. Because of the beautiful San Diego weather, this elevator went in after the podium level was completed and the building went up around it.

## Construction Use:

The contractor was able to use this elevator for transporting men and materials during construction. The elimination of a construction hoist from the project budget almost paid for the elevator.



Project video: <https://youtu.be/NXULSAOUIMo>

## COLUMBIA STREET APARTMENTS SAN DIEGO, CA

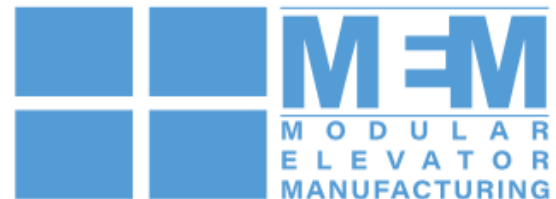


## Contractor:

Cannon Constructors  
858-486-7888  
13230 Evening Creek drive, S.D., CA 92128  
<https://www.cannongroup.com/>

## Architect:

DESS Architecture  
619-573-5522  
4859 West Mountain View Drive  
San Diego, CA 92116  
<https://www.desspartners.com/>



# Unique Installation Solutions

## Google Spruce Goose Project, CA



### ELEVATOR DESCRIPTION:

There is an entire community under that beautiful timber framed roof. That was the challenge for Matt Construction and MEM. How to install modular hoistways without cutting holes in that “historic” building. The solution was to build “sectional” elevators. The lower section short enough to be craned into place and the upper section could be “slipped in” under the ceiling with a Pettibone (construction forklift). It worked beautifully and the project was a great example of Modular Elevator Manufacturing’s “out of the box” thinking.

### Project Article:

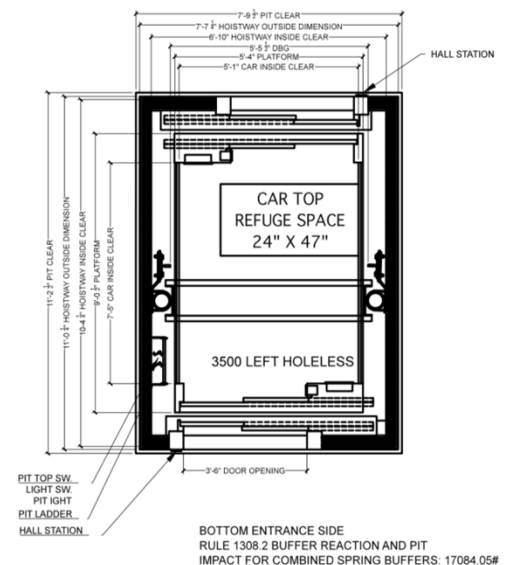
<https://www.dezeen.com/2018/12/05/google-spruce-goose-office-los-angeles-zgf/>

### Contractor:

Matt Construction  
Randal Wallace  
562-263-2532 or 562-903-2277  
9814 Norwalk Boulevard, Suite 100  
Santa Fe Springs, CA 90670  
<https://www.mattconstruction.com/>

### Architect:

ZGF Architects  
515 South Flower Street, Suite 3700  
Los Angeles, California 90071  
213-617-1901  
<https://www.zgf.com/project/google-spruce-goose/>



# Unique Installation Solutions

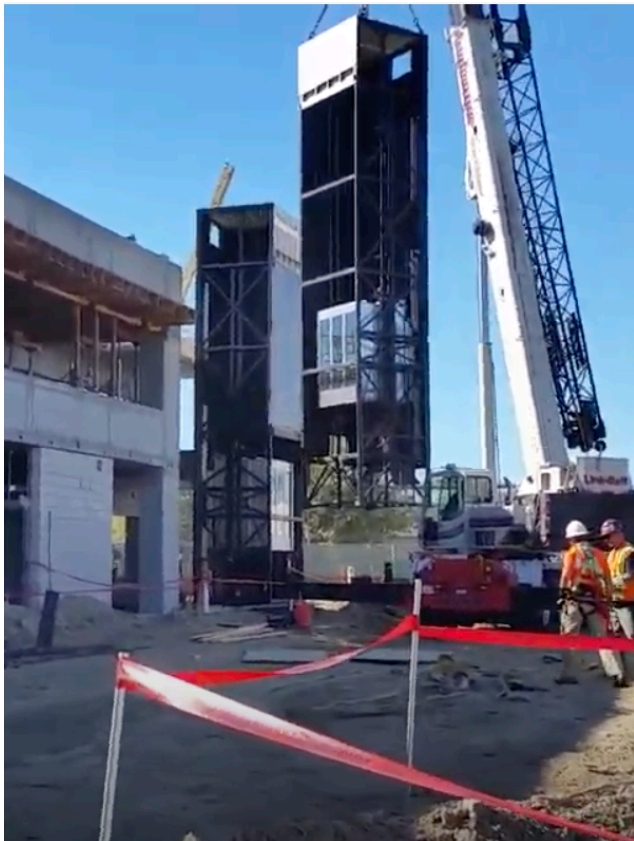
## Indio County Jail Parking Structure- Indio, CA



### ELEVATOR DESCRIPTION:

There is nothing extraordinary about a four stop, glass back duplex... While we are quite proud of these elevators, they really aren't that exceptional. However, when McCarthy Construction approached us with this project and the ultra-aggressive timeline, we knew that only MEM would be able to provide the "extraordinary" solution.

From design to turn-over, the entire project took just 9 months! Try that with a conventional elevator...



### Contractor:

McCarthy Construction

Randy Meier

949-851-8383

20401 SW Birch St., Newport Beach, CA 92660

<https://www.mccarthy.com/locations/newport-beach>

### Architect:

IPD

949-595-8004

2 Faraday, suite 101, Irvine, CA 92618

<https://www.ipd-global.com/>

Watch the final elevator go in:

<https://youtu.be/UeuTVd0H5Ys>



# Conclusion

We would like to thank you for the opportunity. When it comes to vertical transportation feel free to use us as a resource, even if you are just exploring elevator options at this time. We eat, sleep and breath elevators! Far too often elevators are made confusing or information is hard to come by, we will assist you in any way we can.

Just remember there are no other elevators like MEM elevators. They are are both cutting edge in the slow moving world of elevators, but also have a very long track record of success. MEM elevators are extremely flexible in design and implementation, but can be factory produced at a great savings for the customer. And lastly, they are the present and future for all low and mid-rise applications. They are just better.

We look forward to partnering with you further, so please keep an open line of communication. You can find out more at [modularelevator.net](https://modularelevator.net) or contact us at your convenience. You will find we are ready and willing to be your best solution. We are quality elevators taking you higher.



<https://modularelevator.net/>